

## Postal Code 78724

## Residential Statistics



October 2021

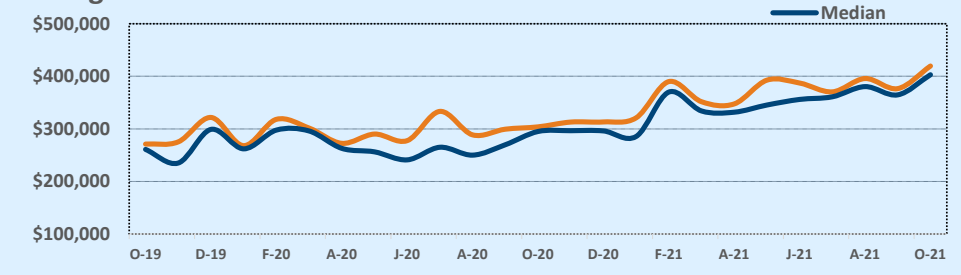
Listings	This Month			Year-to-Date		
	Oct 2021	Oct 2020	Change	2021	2020	Change
Single Family Sales	34	25	+36.0%	361	246	+46.7%
Condo/TH Sales	--	--	--	3	--	--
<b>Total Sales</b>	<b>34</b>	<b>25</b>	<b>+36.0%</b>	<b>364</b>	<b>246</b>	<b>+48.0%</b>
New Homes Only	1	2	-50.0%	32	32	--
Resale Only	33	23	+43.5%	332	214	+55.1%
Sales Volume	\$14,265,906	\$7,594,603	+87.8%	\$138,367,825	\$73,111,819	+89.3%
New Listings	40	19	+110.5%	430	297	+44.8%
Pending	--	--	--	--	--	--
Withdrawn	1	2	-50.0%	2	10	-80.0%
Expired	1	2	-50.0%	2	10	-80.0%
Months of Inventory	0.9	0.3	+166.5%	N/A	N/A	--

Average	This Month			Year-to-Date		
	Oct 2021	Oct 2020	Change	2021	2020	Change
List Price	\$408,973	\$298,727	+36.9%	\$366,602	\$298,238	+22.9%
List Price/SqFt	\$227	\$189	+20.0%	\$210	\$178	+18.1%
Sold Price	\$419,585	\$303,784	+38.1%	\$380,131	\$297,203	+27.9%
Sold Price/SqFt	\$234	\$192	+21.8%	\$219	\$177	+23.4%
Sold Price / Orig LP	103.1%	101.8%	+1.3%	104.2%	99.3%	+4.8%
Days on Market	9	27	-65.7%	8	31	-75.5%

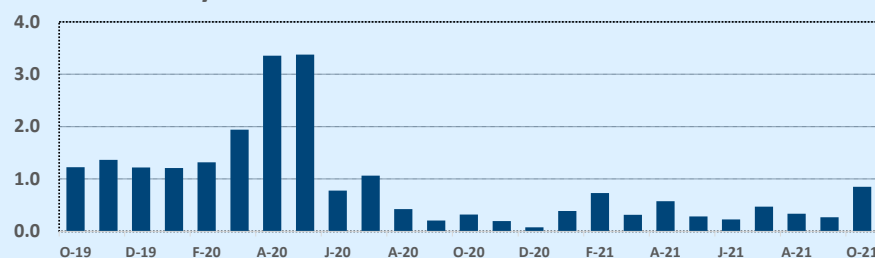
Median	This Month			Year-to-Date		
	Oct 2021	Oct 2020	Change	2021	2020	Change
List Price	\$404,887	\$289,900	+39.7%	\$354,295	\$265,000	+33.7%
List Price/SqFt	\$222	\$181	+22.5%	\$205	\$172	+19.2%
Sold Price	\$403,000	\$295,000	+36.6%	\$364,709	\$265,850	+37.2%
Sold Price/SqFt	\$228	\$190	+19.8%	\$209	\$172	+21.6%
Sold Price / Orig LP	100.0%	100.2%	-0.2%	100.0%	100.0%	--
Days on Market	5	11	-59.1%	4	11	-63.6%

Price Range	This Month			Year-to-Date		
	New	Sales	DOM	New	Sales	DOM
\$149,999 or under	--	--	--	--	--	--
\$150,000- \$199,999	--	--	--	1	2	3
\$200,000- \$249,999	--	--	--	13	7	11
\$250,000- \$299,999	4	--	--	40	34	8
\$300,000- \$349,999	5	5	5	106	87	6
\$350,000- \$399,999	12	10	8	142	114	5
\$400,000- \$449,999	9	10	8	61	58	8
\$450,000- \$499,999	7	3	26	37	30	17
\$500,000- \$549,999	1	4	6	11	13	5
\$550,000- \$599,999	1	2	18	13	8	13
\$600,000- \$699,999	--	--	--	3	10	8
\$700,000- \$799,999	1	--	--	1	--	--
\$800,000- \$899,999	--	--	--	1	1	154
\$900,000- \$999,999	--	--	--	--	--	--
\$1M - \$1.99M	--	--	--	--	--	--
\$2M - \$2.99M	--	--	--	1	--	--
\$3M+	--	--	--	--	--	--
<b>Totals</b>	<b>40</b>	<b>34</b>	<b>9</b>	<b>430</b>	<b>364</b>	<b>8</b>

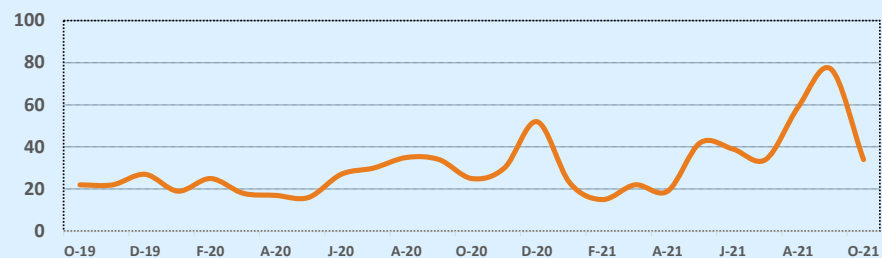
Average & Median Sales Price - Last Two Years



Months of Inventory - Last Two Years



Number of Sales - Last Two Years



Based on information from the Austin Board of REALTORS® (alternatively, from ACTRIS). Neither the Board nor ACTRIS guarantees or is in any way responsible for its accuracy. The Austin Board of REALTORS®, ACTRIS and their affiliates provide the MLS and all content therein "AS IS" and without any warranty, express or implied. Data maintained by the Board or ACTRIS may not reflect all real estate activity in the market.